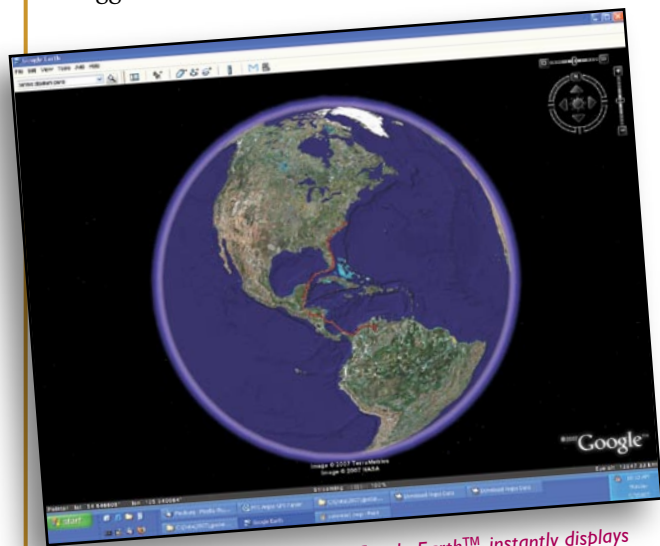


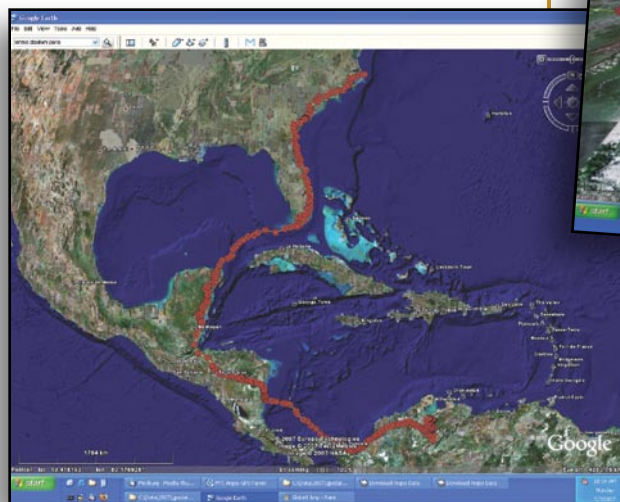
## Latest GPS Parser

As GPS enhanced PTTs become the predominant tool to accurately track bird species worldwide, biologists are now focusing on ways to sort through and present vast amounts of data.

The parsing software we provide with our GPS PTTs efficiently accomplishes the task of parsing data. However, over the last few months we have been asked if there was an easy way of importing the parsed data into Google Earth™ which would then plot the coordinates to display a track. As always, we give due consideration to all requests or suggestions from customers.



Importing the PTT's GPS data into Google Earth™ instantly displays a track.



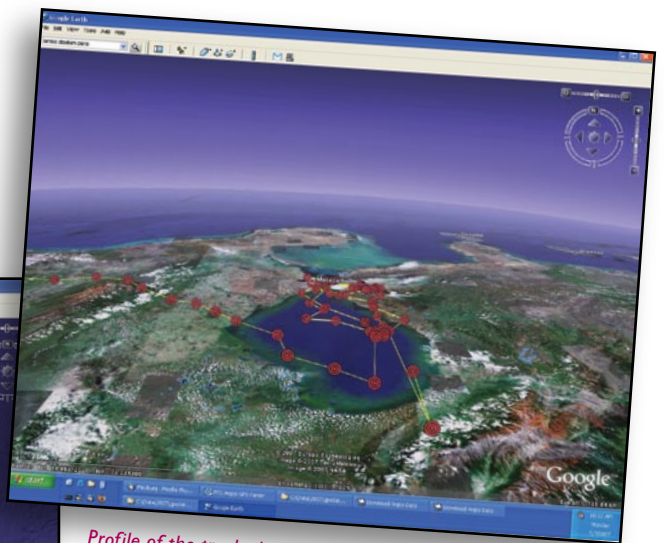
Zooming in on the track on Google Earth™.

Software development is an oncoming and integral part of our company's culture. After finding a free slot in our R & D slate, we worked on incorporating this new capability into our GPS parser.

Our new GPS parser now has the capability of importing the PTT's GPS data into Google Earth™ to instantly display tracks. By clicking this option when installing the new parser, a file is created which can then be imported into Google Earth™. The three screen captures shown are examples of how data is displayed.

We will start shipping our new and improved parser with all new GPS PTTs in early July. Bear with us as we modify and incorporate user friendly instructions into our manuals for the new parser.

If you are a current customer and would like a copy of the new parser, please email us at [microwt@aol.com](mailto:microwt@aol.com).



Profile of the track showing topography and altitude.

## Please Note...

we will be closed from Friday, July 20th to Wednesday, July 25th for our biennial retreat. We will begin returning phone and email messages when we reopen on Thursday, July 26th.

## Congratulations!

We congratulate our "MTI family" high school students on their graduations. From left to right:

Kirsten (our Production Manager's daughter) who will be attending the University of Maryland; Jennifer and Eric (our part time trainees) who will be attending Bryn Mawr College in Pennsylvania and the University of Maryland, respectively.

